



# GAT MONTHLY MEMBERSHIP PROGRESS REPORT

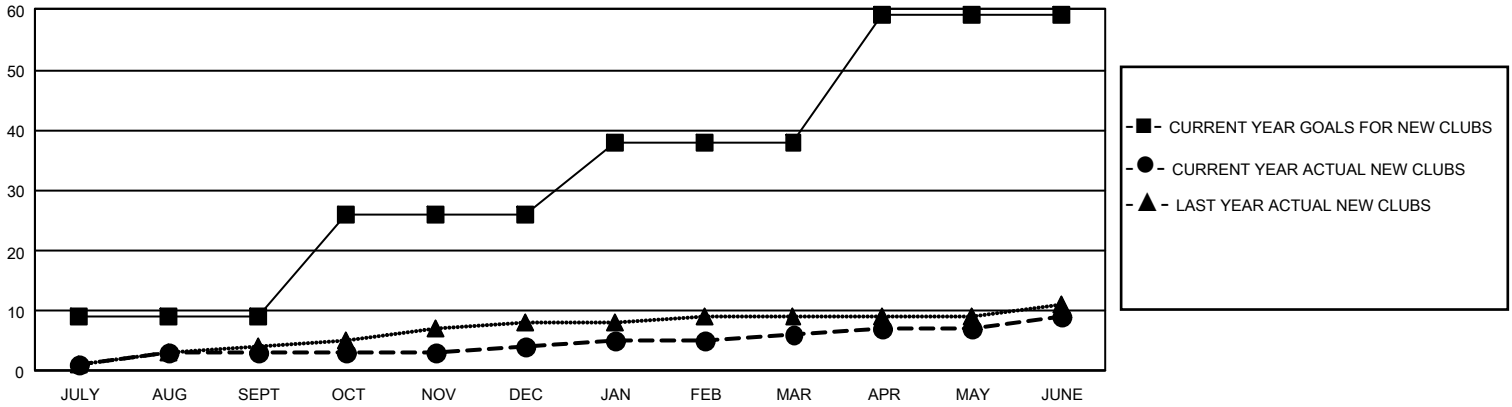
Results as of: 6/30/2022

## GMT Constitutional Area 1, Group A

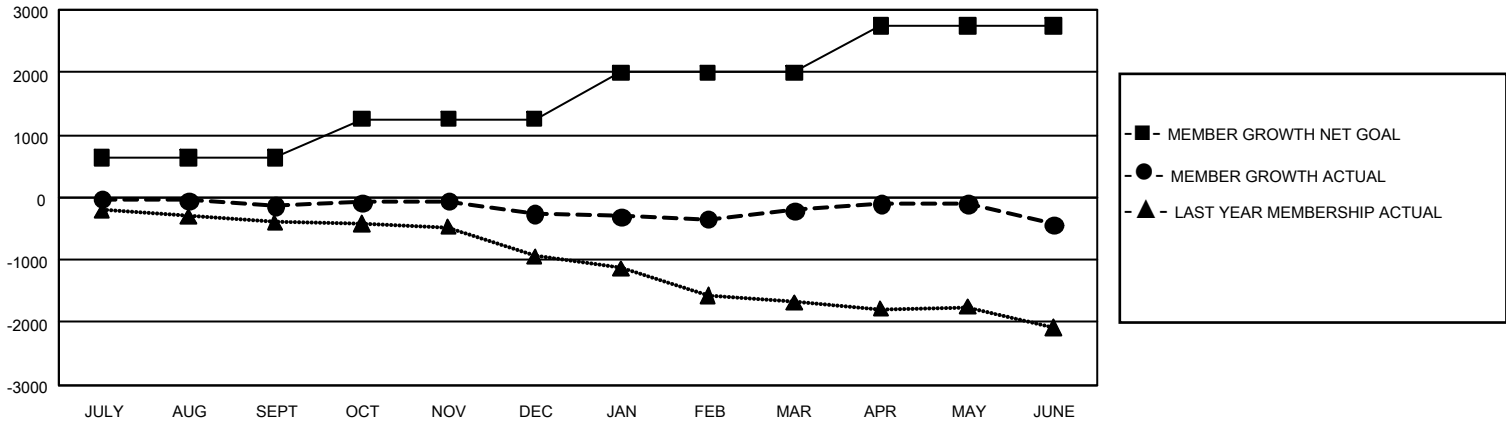
REPORT DOES NOT INCLUDE CLUBS IN UNDISTRICTED AREAS.

Clubs				Members			
RESULTS FOR 2021-2022				RESULTS FOR 2021-2022			
QUARTER	NEW CLUB GOAL	NEW CLUBS	DROPPED CLUBS	QUARTER	MEMBER GROWTH NET GOAL	MEMBER GROWTH ACTUAL	DROPPED MEMBERS ACTUAL (including transfers)
JULY/AUG/SEPT	27	3	18	JULY/AUG/SEPT	634	1,181	1,113
OCT/NOV/DEC	51	1	11	OCT/NOV/DEC	621	1,005	1,033
JAN/FEB/MAR	36	2	3	JAN/FEB/MAR	747	1,152	952
APR/MAY/JUNE	63	3	14	APR/MAY/JUNE	744	1,441	1,552

GOALS AND ACTUAL NEW CLUBS CUMULATIVE



GOALS AND ACTUAL MEMBERS CUMULATIVE



<b>DROPPED CLUBS: 45</b>	703 CLUBS OF 1,083 ADDED 1 OR MORE NEW MEMBERS	<b>GENDER DISTRIBUTION</b>	
		MALE 18,092 (62.80%) FEMALE 10,713 (37.19%) NON BINARY 2 (0.01%) PREFER NOT TO ANSWER 3 (0.01%)	
<b>DROPPED MEMBERS</b>		<a href="#">CLICK HERE FOR CUMULATIVE MEMBERSHIP DATA</a>	TOTAL FAMILY UNIT MEMBERS 4,453
DECEASED 445 CLUB CANCELLED 529 OTHER 3,675 <b>TOTAL 4,649</b>	FAMILY MEMBERS PAYING HALF DUES 2,278		